



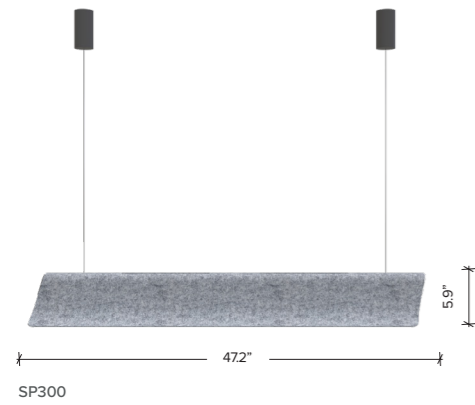
SUONO FLOW

Designed by **Ali BERKMAN**

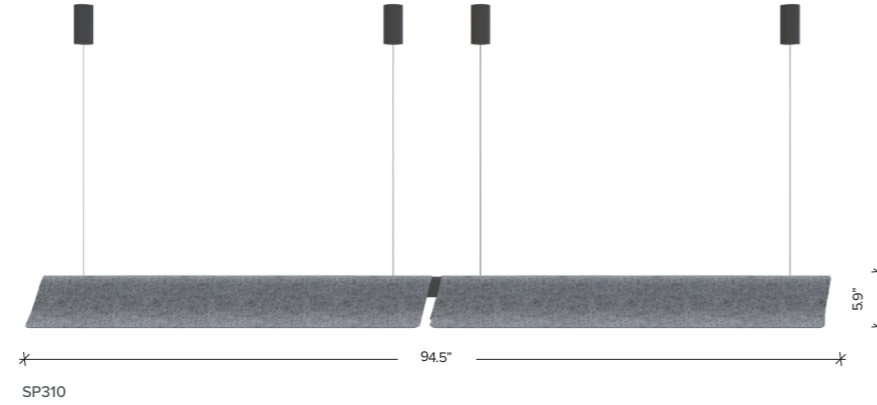
Product Sheet



SUONO FLOW 4



SUONO FLOW 8



- Acoustic
- Fire Retardant
- Eco-Friendly
- Easy Clean
- 10 Years Guarantee

PRODUCT DETAILS

Composition
100% polyester (recycled PET appx. 50%)

Raw Material Weight
1300g/m² (+/-5%)

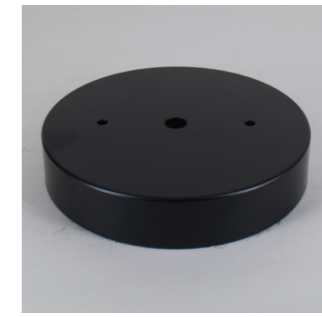
Type	Dimensions (mm)	Installation	Product Weight Natural	Product Weight Mandarin
Flow Acoustic Lighting On/Off Direct	W: 7.9" L: 47.2" H: 5.9"	Free Hanging	6.6 lbs / unit (±5%)	7.7 lbs / unit (±5%)
Flow Acoustic Lighting Dali Direct	W: 7.9" L: 47.2" H: 5.9"	Free Hanging	6.6 lbs / unit (±5%)	7.7 lbs / unit (±5%)
Flow Acoustic Lighting Casambi Direct	W: 7.9" L: 47.2" H: 5.9"	Free Hanging	6.6 lbs / unit (±5%)	7.7 lbs / unit (±5%)
Flow Acoustic Lighting On/Off Direct + Indirect	W: 7.9" L: 47.2" H: 5.9"	Free Hanging	6.6 lbs / unit (±5%)	7.7 lbs / unit (±5%)
Flow Acoustic Lighting Dali Direct + Indirect	W: 7.9" L: 47.2" H: 5.9"	Free Hanging	6.6 lbs / unit (±5%)	7.7 lbs / unit (±5%)
Flow Acoustic Lighting Casambi Direct + Indirect	W: 7.9" L: 47.2" H: 5.9"	Free Hanging	6.6 lbs / unit (±5%)	7.7 lbs / unit (±5%)
Flow Acoustic Lighting On/Off Direct	W: 7.9" L: 94.5" H: 5.9"	Free Hanging	6.6 lbs / unit (±5%)	7.7 lbs / unit (±5%)
Flow Acoustic Lighting Dali Direct	W: 7.9" L: 94.5" H: 5.9"	Free Hanging	6.6 lbs / unit (±5%)	7.7 lbs / unit (±5%)
Flow Acoustic Lighting Casambi Direct	W: 7.9" L: 94.5" H: 5.9"	Free Hanging	6.6 lbs / unit (±5%)	7.7 lbs / unit (±5%)
Flow Acoustic Lighting On/Off Direct + Indirect	W: 7.9" L: 94.5" H: 5.9"	Free Hanging	6.6 lbs / unit (±5%)	7.7 lbs / unit (±5%)
Flow Acoustic Lighting Dali Direct + Indirect	W: 7.9" L: 94.5" H: 5.9"	Free Hanging	6.6 lbs / unit (±5%)	7.7 lbs / unit (±5%)
Flow Acoustic Lighting Casambi Direct + Indirect	W: 7.9" L: 94.5" H: 5.9"	Free Hanging	6.6 lbs / unit (±5%)	7.7 lbs / unit (±5%)

W: Width L: Length H: Height

LIGHTING SPECIFICATIONS

Lighting Dimesions (cm)	Wattage (W)	Mounting Type	Diffuser Options	Lumen Output (lm)	Lighting Type	Control Type
120	28 W	Pendant	Microprismatic	3800 lm	Direct + Indirect	ON/OFF
120	28 W	Pendant	Microprismatic	3800 lm	Direct + Indirect	DALI
120	28 W	Pendant	Microprismatic	3800 lm	Direct + Indirect	CASAMBI
240	56 W	Pendant	Microprismatic	7600 lm	Direct + Indirect	ON/OFF
240	56 W	Pendant	Microprismatic	7600 lm	Direct + Indirect	DALI
240	56 W	Pendant	Microprismatic	7600 lm	Direct + Indirect	CASAMBI

MOUNTING OPTIONS



SURFACE via 6inch Round Canopy

CODE BUILDER

SUOFL

LENGTH
4=4FT
8=8FT

DIMMING/CONTROL
D0=Non Dimming
D1=0-10V dimming
D2=Casambi

CANOPY COLOR
WH=White
BL=Black

ACOUSTIC COLOR
See page 3

EXAMPLE: SUOFL-4-D1-WH-FLM06

PRODUCT CERTIFICATES

Acoustic Certificates
 ASTM C423 (US Standard)
 EN ISO 354 (EU Standard)

Certificate of Product Conformity
 EN 60598 (Lighting)

Certificate of Product Conformity
 EU 305/2011

Abrasion
 EN ISO 12947 / Result Performance 'A'

Declare
 Declare CDPH Standard Method v1.2-201 /
 Result '10 + Years' (LEED v4)

Moisture Resistance
 EN 13964 2014 / Result 'Class B'

Classification of Reaction to Fire
 EN 13501 / Result 'B-s1,d0'
 EN ISO/IEC 17025 / Result 'Class A'

The Quality Management System
 ISO 9001:2015

The Environmental Managemet System
 ISO 14001:2015

UV Exposure Testing
 ISO 4892-3:2016 / Result '5-4'

Bleach Cleanable
 ISO 105E03 / Result '5-4'

Environmental Lables and Declarations
 ISO 14025-2010: Labels / Result 'TYPE III'

Ekoteks
 ISO 1833 / Result '100% Polyester'
 Fibre Composition

ISO 9237:1995 / Result '387.9 1/m²/sn'
 Air Permeability

ISO 4920:2012 / Result 'ISO 0'
 Spray Test

ISO 14419:2010 / Result '0 D'
 Oil Repellency

ISO 105 B02:1994 / Result '6+'
 Light Fastness Grade

SNV 195 651:1968 / Result '1'
 Sensory Odour

ISO 14184-1:2011 Low VOC / Result 'N.D'
 Formaldehyde-Free

ISO 20743:2013 / Result 'Strong Efficacy'
 99.9% Antibacterial structure

Superior thermal insulation 0,040 W/mK

MAS Certified Green
 CDPH Standard Method v1.2, Eligible for LEED v4

Material Safety

Declare.

6 MM / 12 MM ACOUSTIC PET FELT FELTOUCH

Final Assembly: Duzce, Turkey
Life Expectancy: 10+ Year(s)
End of Life Options: Salvageable/Reusable in its Entirety, Take Back Program (Zeroburn.org), Recyclable (100%)
EU CoC Screened: Does Not Contain

Ingredients:

Recycled PET Fibers: Polyethylene Terephthalate; **Virgin Polyester Fibers:** Polyethylene Terephthalate

Living Building Challenge Criteria: Compliant

I-13 Red List:
 LBC Red List Free % Disclosed: 100% at 100ppm
 LBC Red List Approved VOC Content: Not Applicable
 Declared

I-10 Interior Performance: CDPH Standard Method v1.2-2017
I-14 Responsible Sourcing: Not Applicable

FEL-0001

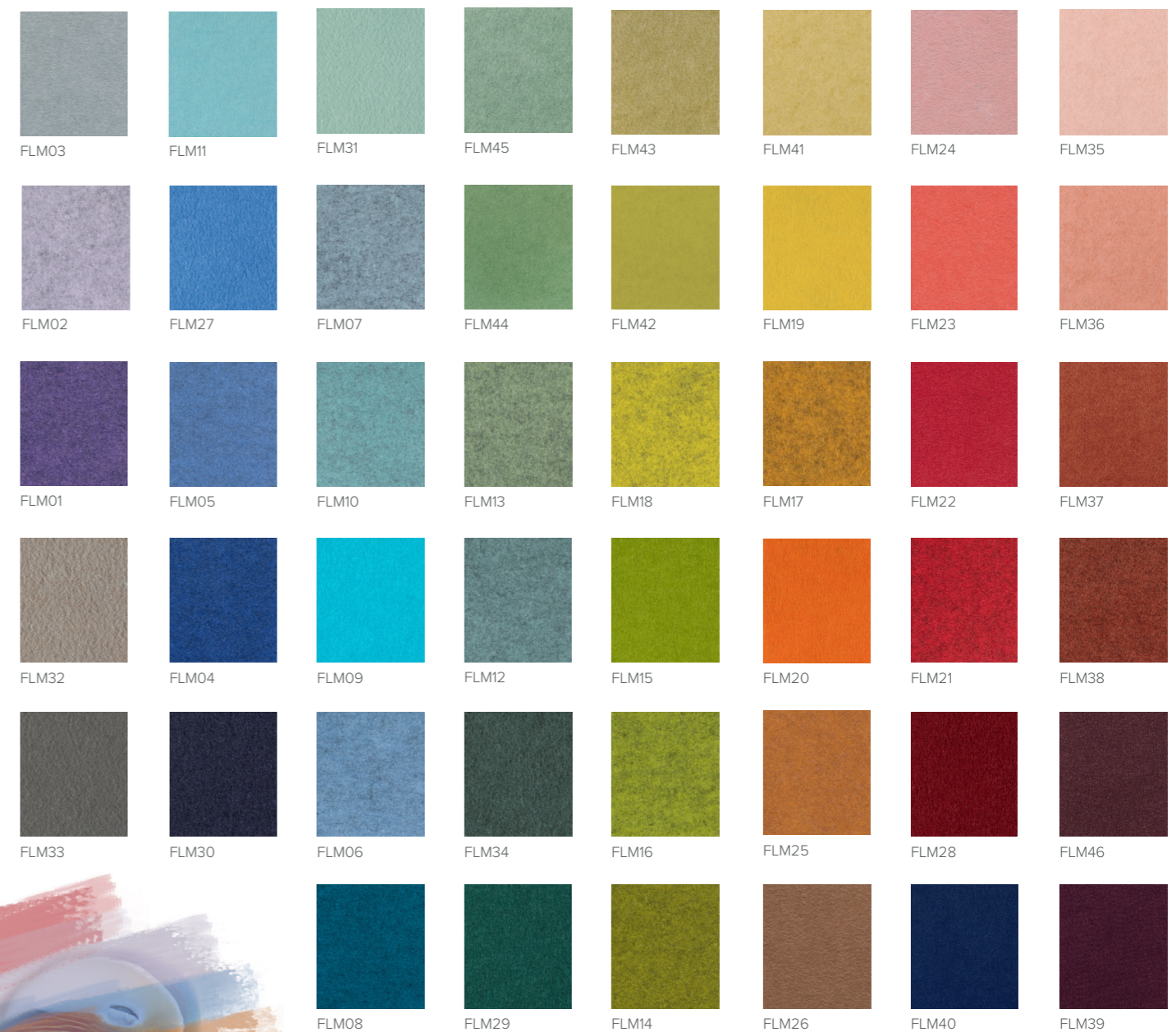
MANUFACTURER RESPONSIBLE FOR LABEL ACCURACY
 INTERNATIONAL LIVING FUTURE INSTITUTE™ living-future.org/declare

PRODUCT COLOUR OPTIONS

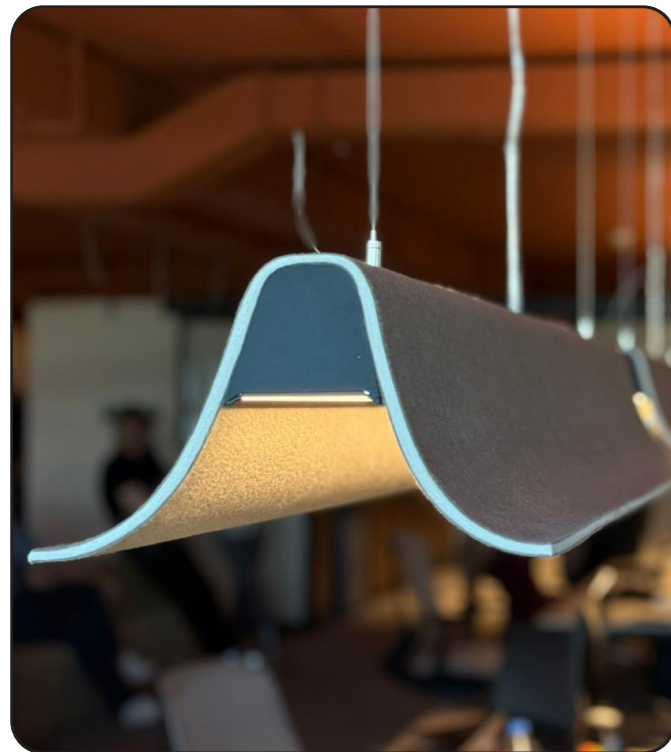
NATURAL COLOURS



MANDARIN COLOURS



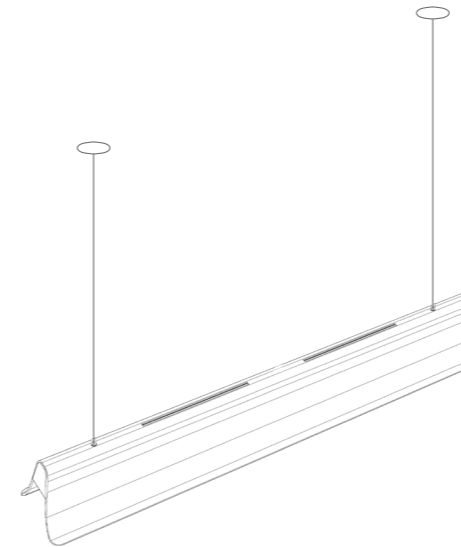
REFERENCE PROJECTS



PRODUCT INSTALLATION

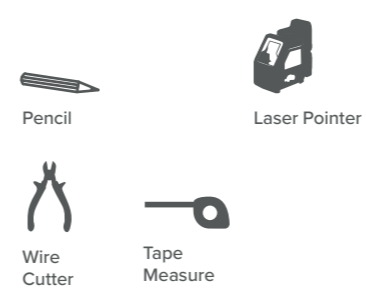
FLOW SUSPENDED

6 inch round canopy
STANDARD

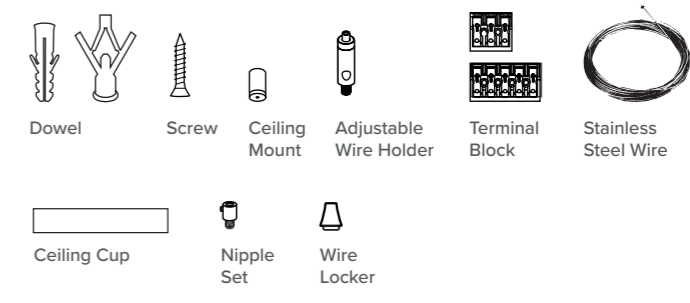


2 ceiling junction boxes are required, each canopy will have a power cable. One for the direct light and one for the indirect light

PRODUCT REQUIRED TOOLS



PRODUCT CONTENT



ABOUT PET FELT

- PET Felt is a 100% polyester material recycled 50% from PET bottles.
- The material is manufactured with nonwoven technology without any chemical binders from production to end user.
- Thanks to its recycled content from PET bottles, it does not contain more than 0,02% of the ambient moisture. Therefore, it also has an anti-bacterial and partially anti-allergic structure and it is naturally hydrophobic. In this way, it is water repellent and sun proof. It can be used in humid areas in all indoor spaces.
- PET Felt is easy to clean and maintain.

MAINTENANCE & CLEANING INSTRUCTIONS

- Indoor use only
- Cleaning methods:



Wipe clean with a damp cloth



Vacuum regularly



Bleach cleanable (natural colors only)

- If a wet spill occurs,
 - Dry the liquid with a dry cloth as soon as possible to prevent absorption.
 - To remove stains, copious amounts of water can be applied to the surface with a cloth without rubbing. Generally, water is sufficient to remove light stains.
 - If the stain does not come off with water, a mild detergent may be used. Avoid hard detergents.
 - If the product is portable and small enough, it is best to take the services of a professional dry cleaning company.
 - Lastly, dry it with a dry towel while still wet.
- If a stubborn stain occurs,
 - Collect the stain with a dry cloth as soon as possible to prevent absorption.
 - To remove stains, firstly apply copious amounts of water to the surface with a cloth without rubbing.
 - If the stain does not come off with water, a mild detergent should be used. Avoid hard detergents.
 - If the product is portable and small enough, it is best to take the services of a professional dry cleaning company after the first intervention
 - Lastly, dry it with a dry towel while still wet.
- During cleaning process, avoid excessive friction and rubbing as it will continue the felting process and change the appearance of the felt surface.
- It is recommended that the cleaning method be tested in an inconspicuous area.

