



RISK OF FIRE AND ELECTRICAL SHOCK. FIXTURE MUST BE INSTALLED BY A QUALIFIED ELECTRICIAN ONLY IN ACCORDANCE WITH NATIONAL, LOCAL BUILDING AND ELECTRICAL CODES. DISCONNECT POWER AT ELECTRICAL PANEL BEFORE SERVICING.

IMPORTANT SAFETY INSTRUCTIONS

1. Read all instructions completely before beginning. Keep these instructions in safe place for future reference.
2. To reduce risk of fire and over-heating, make sure all connections are tight.
3. Turn off the electrical power before proceeding.



CAUTION: RISK OF FIRE OR ELECTRIC SHOCK

LED downlight installation requires knowledge of luminaires electrical systems. If not qualified, do not attempt installation. Contact a qualified person.

WARNING - RISK OF FIRE OR ELECTRIC SHOCK. LED downlight installation requires knowledge of luminaires electrical systems. If not qualified, do not attempt installation. Contact a qualified electrician.

WARNING - Install these downlights only in housing that has the construction features and dimensions shown in the photographs and/or drawings and where the input rating of the LED downlight does not exceed the input rating of the housing.

WARNING - To prevent wiring damage or abrasion, do not expose wiring to edges of sheet metal or other sharp objects.

Do not make or alter any open holes in an enclosure of wiring or electrical components during installation.

Please examine all parts that are not intended to be replaced by the LED downlight for damage and replace any damaged parts prior to installation of the LED downlight.

NEW CONSTRUCTION

List:

- 1.Engine
- 2.New Construction-Housing Insulation Kit(IC)or
New Construction-Frame Kit (NON-IC)
- 3.Trim Or Trimless

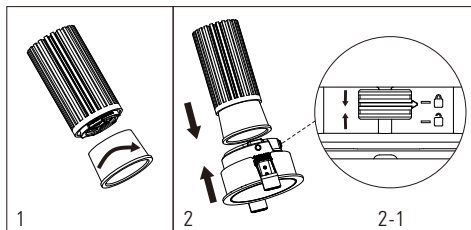
REMODEL

List:

- 1.Engine
- 2.LED Driver Box(Remodel)
- 3.Trim Or Trimless

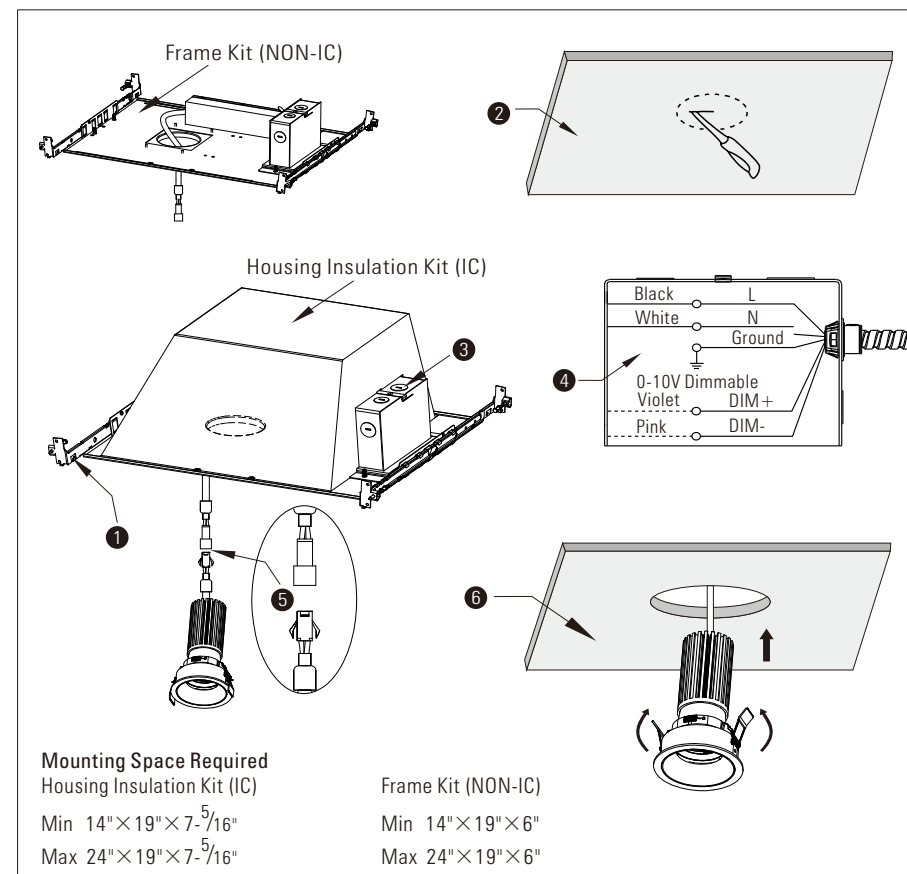
When trim, lens and LED engine are separated, assemble them by the following steps:

1. Assemble Lens And LED Engine:
Attached together, and secure them tight with clockwise direction.
2. Assemble Lens And Trim:
Slide the button downward in the trim direction to combine the lens and trim. Once aligned, slide it upward to lock into place (See 2-1).



Installation - New Construction Applications

- Step 1:** Locate fixture position. Install the fixture in the ceiling using the two hanger bars **1** (Supplied) . Mount the fixture in the ceiling so that the weight of the fixture is supported by the hanger bars, mounting channel, bar, and/or hanger wires secured to the building structure. Drill hole in drywall **2**. The size is as per the table (A).
- Step 2:** Open the J-box **3** **4** , connect the power supply and ground wire according to the wiring diagram. (Only if the driver has 0-10V dimming, the dimming wire needs to be connected). For Trimless installation, refer to Diagram B.
- Step 3:** Connect LED downlight with housing using provided quick-connectors **5** .
- Step 4:** Complete installation by carefully tighten the spring clips through the ceiling opening **6** .





RISK OF FIRE AND ELECTRICAL SHOCK. FIXTURE MUST BE INSTALLED BY A QUALIFIED ELECTRICIAN ONLY IN ACCORDANCE WITH NATIONAL, LOCAL BUILDING AND ELECTRICAL CODES. DISCONNECT POWER AT ELECTRICAL PANEL BEFORE SERVICING.

Installation - Remodel Applications

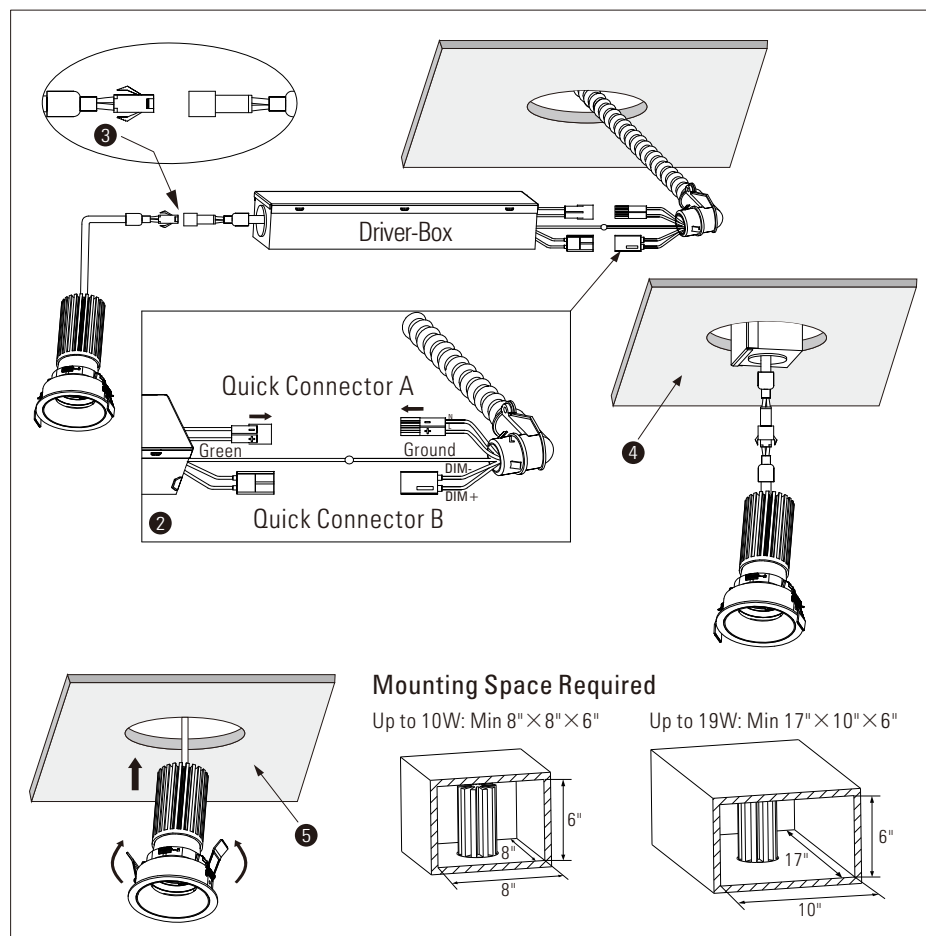
Step 1: Drill hole in the ceiling. See opening size reference (OSR, table A).

Step 2: Plug AC power cord into the quick connector A. (Only if the driver has 0-10V dimming, the quick connector B needs to be connected.) Plug the male connector with the female connector. Connect the ground wire ②. For Trimless installation, refer to Diagram B.

Step 3: Connect LED downlight with housing using provided quick-connectors ③.

Step 4: The driver box is fixed to the ceiling by magnetic force of a magnet ④.

Step 5: Complete installation by carefully tighten the spring clips through the ceiling opening ⑤.



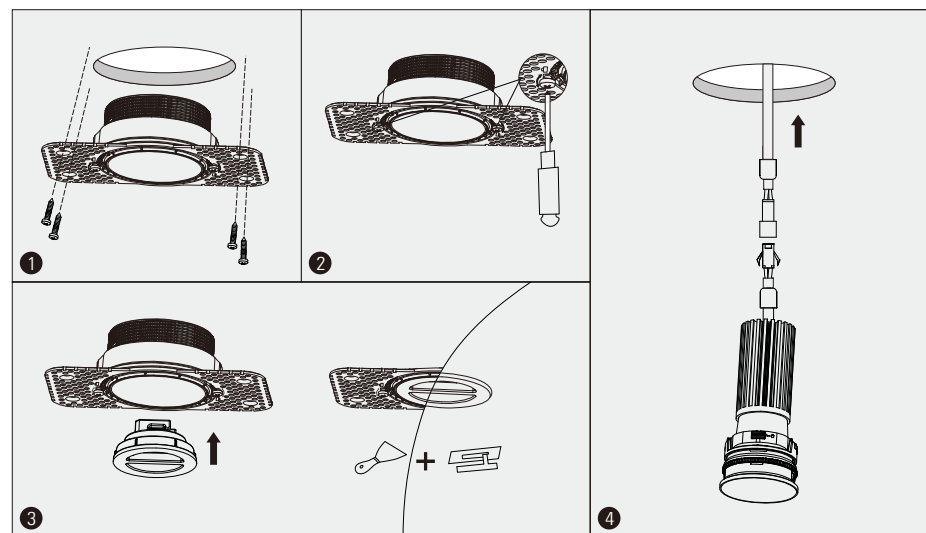
Opening Size Reference

Table (A)

Trim Style	Opening Size Reference
2inch Round Trim	$\Phi 2\frac{1}{4}"$ (Round Hole)
2inch Round Trimless	$\Phi 3\frac{1}{2}"$ (Round Hole)
3inch Round Trim	$\Phi 3"$ (Round Hole)
3inch Round Trimless	$\Phi 3\frac{1}{2}"$ (Round Hole)
3inch Square Trim	$3" \times 2\frac{7}{8}"$ (Rectangle Hole)
3inch Square Trimless	$3\frac{1}{2}" \times 3\frac{5}{16}"$ (Square Hole)

Trimless Mounting (B)

1. Secure the outer ring to the ceiling with screws.
2. Rotate the inner ring to set the desired height. Use a screwdriver to tighten the screws on both sides (Clockwise) to fix the inner ring in place.
3. Install the dust cover and apply plaster for a seamless finish.



ATTENTION: Install in accordance with national and local building and electrical codes.

All rights reserved. Due to continuous product improvements, specifications and dimensions are subject to change without notice.